



## MW owners to open Artizen restaurant at HiSAM

The SFCA is pleased to announce that a significant new restaurant is opening this month in the ground floor kitchen space of the Hawai'i State Art Museum which will benefit downtown workers, attract museum guests and bring Honolulu's foodies back to



Jonathon Johnson, J. Karr and Andrew Rose sign the lease agreement Nov. 3.

our historic building.

Named "Artizen," the new restaurant is the creation of Michelle Karr-Ueoka and Wade Ueoka, the wife-and-husband team of MW Restaurant.

Executive Manager and co-restaurant's owner J. Karr signed the lease for the space Nov. 3 with the Friends of the Hawai'i State Art Museum. The restaurant will be open Monday through Saturday and will serve lunch, special event meals and possibly morning pastries at the museum.

The couple, who will continue to run their popular MW Restaurant on Kapi'olani Boulevard, plan a "soft opening" at the museum location this month.

The HiSAM kitchen space thrived during Ed Kenney's Downtown tenure but has been vacant since the most recent tenant, Grand Café and Bakery, closed last May.

MW Restaurant's menu includes many local favorites such as ahi poke, fried chicken, and oxtail and Portuguese bean soups. Another big draw is sure to be their made to order bento lunches.

The husband-and-wife team each spent years working with influential local chef Alan Wong—Michelle primarily as pastry chef and Wade as chef de cuisine. Both have also worked at Thomas Keller's famed The French Laundry in Napa Valley.

Karr said the concept for Artizen will be "grab and go" meals featuring daily specials, salads and sandwiches on fresh



baked bread. There will not be table service, but plenty of available seating in the restaurant area.

"We are going to move fast here," Karr said. The total lease space is 2,656 square feet with a seating area of 1,434 square feet, the kitchen includes 842 square feet and an office.

Outdoor seating in the HiSAM Sculpture Garden is shared with other building occupants and museum visitors. The restaurant will be available to cater on the Front Lawn, and 2nd Floor Courtyard for special events.

## DECEMBER FREE EVENTS AT HiSAM

The public is invited to these free events for December 2015 to be held at the Hawai'i State Art Museum in the No.1 Capitol District Building at 250 South Hotel Street in downtown Honolulu. See feature stories and photos of these events in this eNewsletter.

Not subscribed to eNews? [Join here for monthly updates.](#)

**First Friday**  
**Harpist Ruth Freedman**  
**Friday, December 4**  
**6 p.m.–9 p.m.**

Enjoy a HiSAM holiday tradition with traditional classics played by harpist Ruth Freedman.

**Second Saturday**  
**Lauhala Holiday**  
**Saturday, December 12**  
**11 a.m.–3 p.m.**

Join the Ladies of the Lauhala Hui and learn how to weave stars, wreaths and other ornaments for the holiday season.

**Art Lunch**  
**George Woollard: A Life in Art**  
**Tuesday, December 29**  
**12 p.m.–1 p.m.**

Enter into the creative process with painter, printmaker and teacher George Woollard.

**Exhibition**  
**Hawai'i: Change & Continuity**  
**Ongoing**

Explore the richness of artistic expression in Hawai'i in our anniversary exhibition.



## First Friday:

# Holiday Music with Harpist Ruth Freedman

Friday, December 4, 6–9 p.m., Hawai'i State Art Museum, Free



Ruth Freedman will perform songs of the season during First Friday December 4.

**T**o celebrate the holidays, angelic harp artist Ruth Freedman will perform songs of the season during our Dec. 4 First Friday event.

With her beautiful antique harp,

which is more than 100 years old, Ruth play your favorite holiday classics and much more.

Join us from 6 to 9 p.m. for First Friday at the Hawai'i State Mu-

seum.

Next month's First Friday falls on January 1, 2016 and HiSAM will be closed for the New Year's holiday.

## Second Saturday – Lauhala Holiday

Saturday, December 12, 11 a.m.–3 p.m., Hawai'i State Art Museum, Free

**C**ome down to HiSAM and get your Holiday decorating started Hawaiian-style! You'll learn weaving from the Ladies of the Lauhala Hui and go home merrily with ornaments to treasure and share: fish, stars, and mini-wreaths.

Downtown streets aren't crowded on the weekend, so walk, bike, take The Bus or drive to HiSAM on Second Saturday (\$3 flat-rate parking across the street at Ali'i Place; enter at 1099 Alakea St. Free parking available at City & County underground lot at Beretania and Alapai.)

*Come see—it's your art!*





# HiSAM engages new audiences

*A year-end reflection from Jonathan Johnson, Executive Director SFCA*

HiSAM continues to grow into its potential as “The Peoples Museum” through a wide variety of programming. Under the leadership of APP Manager Karen Ewald and Friends of HiSAM co-Presidents Lisa

by HiSAM featuring Artistic Teaching Partners engaging audiences in the galleries; Art & Flea, a First Friday Partnership saw guests searching out clues to post on Instagram to the sounds of KTUH DJ’s; and Hallowbaloo, an

All three events introduced new audiences to HiSAM where they were treated to the recently installed HAWAII: Change & Continuity exhibition.

**Also in the news about HiSAM:** A docent training program began this month and an expanded Art Bento Museum education program is under way including students from three Turn-around Arts schools.

We are thrilled about the announcement of a new restaurant tenant, Artizen by MW opening in December! We look forward to establishing and recruitment for a Gallery Manager position in the New Year.

All this, and let’s not forget HiSAM is staffed by two full time employees: many people are volunteering to make this a truly exciting community place. Join in supporting the Friends of HiSAM in their bid for a Levitt grant to support live music programming at HiSAM next summer. (For details see [www.levittpavilions.org](http://www.levittpavilions.org)).



Hallowbaloo celebration on HiSAM’s front lawn.

Yamada and Andrew Rose, the venue is engaging new audiences.

October featured three events: Art-Zone, a family friendly event sponsored

extravagant adult focused rental event which extended HiSAM’s presence out onto Hotel and Richard Streets for a community block party.

## Art Lunch Lecture – George Woollard ~ A Life in Art Tuesday, December 29, Noon–1 p.m., Hawai’i State Art Museum, Free

Artist and revered teacher George Woollard will share images, stories, philosophy and more with the Art Lunch audience. Not only passionate about his dual endeavors of making art and teaching art, Woollard believes that each provides inspiration to continue practicing the other. Also contributing to the creative fire is a lifetime of travelling the globe, armed with boundless curiosity and a deep belief in the benefits of considering the points-of-view of others.

For Woollard, the feeling of “life” in a work is the gift he seeks to pass on to its viewers. He considers his completed pieces to be best understood as performance art:

“It is in the making of things that the art talks place.”

George Woollard earned a BFA and an MFA from the University of Hawai’i at Manoa, studying first painting and then printmaking. His work is currently on display in Image & Imagination in the galleries of the HiSAM and at the First Hawaiian Center in downtown Honolulu.



Song for Jinja by George Woollard.

# Display cases features artworks by island artists at Hawai'i Convention Center



Eli Baxter and Richie Louie install artworks in the Hawai'i Island display.



The new Hawai'i Island display.

Thousands of local residents and visitors attend events at the Hawai'i Convention Center in Honolulu every year.

At the convention center, dozens of paintings, sculptures and murals provided through the SFCA's Art in Public Places program are exhibited throughout the \$350 million building.

On the third floor are six display cases which have been refreshed with a new exhibit designed to entertain and educate titled "Where We Live: Places of Hawai'i."

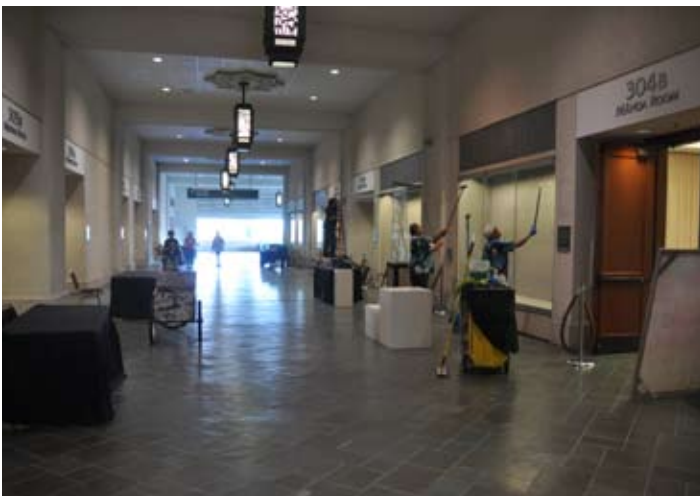
Five of the display cases, which are 7 feet tall by 11 feet long, contain unique artworks focusing on the major islands – Kaua'i and Ni'ihau; Oahu; Maui; Moloka'i, Lana'i and Kaho'olawe; and Hawai'i.

The first case includes information about the SFCA and HiSAM and give this overview of the exhibition:

"For many people who live in Hawai'i or who have visited the islands, the distinctive natural surroundings that

characterize specific locales make an indelible impression, lasting forever in one's memory. Hawai'i's unique environment and striking landscape often serve as subject matter for local artists. Some of the art exhibited here takes viewers back to places they have once visited, while others introduce visitors to new sites vividly interpreted through a variety of artistic visions. All the works are more than simple depictions of geographic areas in Hawai'i. Instead, they evoke a sense of place conveying an essence and capturing a special feeling about the location shown. The art displayed in this exhibition includes realistic and recognizable representations of particular places as well as distilled aspects in abstracted and stylized images. Tranquil settings are shown alongside dynamic and vibrant locations illustrating the diversity found on our island home."

The next time you visit the convention center, take a look at these displays and enjoy art from across our island state.



Staff at the Hawai'i Convention Center clean the display glass before the installation.



Louie putting finishing touches on the Maui display.



# Bring HiSAM home with you using latest links

The SFCA website is filled with useful information and tools for artists, teachers, grantees and art lovers. Information about the SFCA and HiSAM galleries, events, grant availability, deadlines and official reports and documents are all regularly posted and

areas filled with painting and drawings, ceramics, sculpture, photographs and other artworks.

After you've toured one or more of the galleries you may want to look back at a particular piece that grabbed your interest. You might not remember the

name of the artwork or the artist, but you remember what you saw.

Collections Manager Wanda Anae-Onishi has gathered images of all artworks from each section of the museum that will enable you to revisit these works from your computer or cell phone whenever you like.

To follow the links, go to our web site at [sfca.hawaii.gov](http://sfca.hawaii.gov), and click on **HiSAM** in the

tool bar of the SFCA home page and use the pull down to go to **exhibitions**, and then **current exhibitions** and open any of the galleries currently on view. Inside each page is a link to view the artworks in each exhibition.

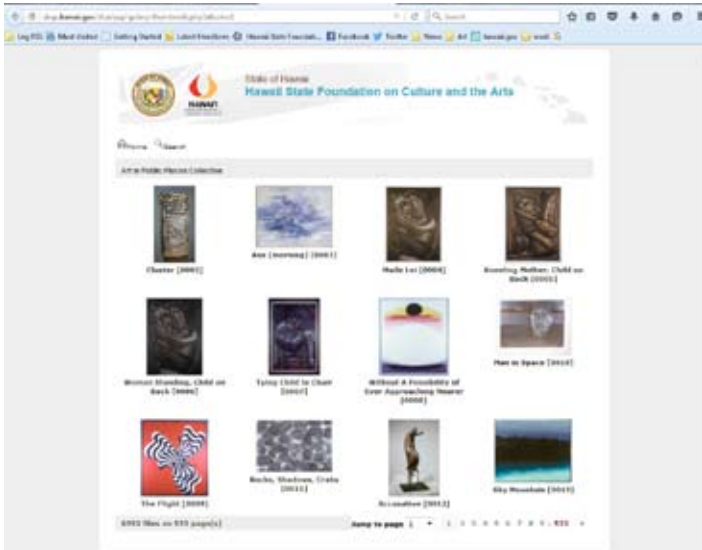
To see the artworks in the Sculpture Garden and Sculpture Lobby again go

to the **HiSAM** pull down, go to **visitor information** and then to **HiSAM Sculpture Garden**. This page contains the links to all the artworks in the garden and the lobby.

These links allow you to bring the museum home with you and see all the artworks currently on display any time you like.

Also on the home page, about halfway down on the left is a link titled **SFCA Funded Programs & Events**.

Click on this link which will connect you to events that are funded all or in part by the SFCA on all major islands. Exhibitions, lectures, literary arts, music, theater, workshops and classes connected to our programs and grantees are listed and linked for easy access to more information.



Screen shot of the Art in Public Places image gallery.

updated.

New to the website are two more reasons to visit the site – a link that allows you to view the art from the four exhibits currently on view as well as the Sculpture Garden and Sculpture Lobby, and a statewide listing of SFCA funded programs and events.

HiSAM has six different exhibition

**Follow these links to see all the artworks in HiSAM**

[Image & Imagination exhibition](#)

[HAWAII: Change & Continuity exhibition](#)

[He Makana exhibition](#)

[Voyaging: The Art of Wayfinding exhibition](#)

[Sculpture Garden](#)

[Sculpture Lobby](#)

## Art Acquisition Selection Committee exhibition visitation schedule

Here is the current schedule for Acquisition Award Selection Committee for January–March 2016. These exhibitions were approved by the SFCA Board of Commissioners at their general meeting Nov. 18.

1) Hui No'eau Visual Arts Center, Makawao, Maui – 2016 Hui No'eau Annual Juried Exhibition – mixed media, juried. January 8-February 18, 2016.

2) Volcano Art Center, Volcano, HI – Sightlines – mixed media, curated. February 13-March 20, 2016.

3) Honolulu Museum of Art, Linekona – Honolulu Print-makers 88th Annual Exhibition – print media, juried. February 24-March 17, 2016.

4) Honolulu Museum of Art, Linekona – CONTACT – mixed media, juried. March 24-April 17, 2016.

5) Maui Arts and Cultural Center, Puunene, HI – Art Maui 2016 – mixed media, juried. March 27-April 23, 2016.

For information about how to have your group's exhibition visited by a SFCA AASC for possible recommendation of artworks to add to the Art in Public Places Collection, visit <http://sfca.hawaii.gov/art-in-public-places/application-forms-2/>

# Ige selects Hamamoto to lead SFCA Board of Commissioners

Governor David Ige has named Patricia Hamamoto the new Chairperson of the SFCA Board of Commissioners.

Hamamoto, who replaces Sherman Warner in the leadership role, was named a commissioner in June. She will serve a four-year term as a volunteer

public school system in 2009.

Hamamoto has held several positions in public education ranging from classroom teacher to various school and state level administrative roles.

She is a graduate of Maryknoll High School and her first teaching job in Hawai'i was teaching Social Studies

*agencies, private-public partnerships, and the impact of unions in supporting government employees.*

**Have you been a member of other boards or commissions?** *Yes. Pacific Resources for Education and Learning, Boy Scouts of America, Salvation Army, Mediation Center of the Pacific, Partners in Franciscan Ministries and Saint Francis School Board.*

**Does it help to understand how the state system works?** *Yes. The state system is a huge complex bureaucracy which moves as directed by laws, rules and policies. Understanding the differences and how they work and complement each other makes for positive and successful results. In addition, working with other state departments and agencies is critical to our success.*

**How important is the SFCA to the state and its people?** *Extremely important - the SFCA is charged with ensuring that our culture, beliefs, practices and values, as seen through the lenses of our artists and craftsmen, are captured, preserved for all times.*

**How important is art in education?** *Schools are in the business of transmitting our culture and preparing our children and youth for the future. What better place than in the schools to promote a love, an understanding and support for art and SFCA.*

**What do you hope to accomplish during your term as chairwoman?** *To make SFCA known and recognized throughout the State as the lead agency in supporting, advocating and promoting Hawaii's culture and the arts. As well as provide all communities access and participation in the many different expressions of culture and the arts.*

**What are the primary difference between being a board member and a SFCA staff member?** *Primary differences - Staff has a wealth of expertise, are responsible for the delivery/implementation of programs that support the goals and priorities of the board members as they work to achieve the vision and mission of SFCA.*



Deputy Comptroller Audrey Hidano leads commissioners Pat Hamamoto and Dean Sakamoto in taking the Oath of Office.

board member and is then eligible for a second four-year term.

Hamamoto served more than three decades in Hawaii's public school system—the last eight years as superintendent of schools. She was also the principal of Saint Louis School for nearly 4 years, retiring in 2013. Her career in education has spanned more than forty years and she still helps out at our public and private schools.

She left her post as chief of Hawaii's

at Highlands Intermediate School in 1975.

**Q & A with Patricia Hamamoto**  
**What skills do you bring that will contribute the SFCA board?** *I bring a variety of experiences: from the schools (teacher - principal); working understanding of the interaction between the executive and legislative branches of government; when it comes to the budget and passing bills; working with a board, other department heads, different state*