

# Kāhea

*Newsletter of the Mayor's Office of Culture and the Arts*

**Kau ka lā i ka lolo, ho'i ke aka i ke kino.**

*(The sun stands over the brain, the shadow retreats into the body.)*

**September 1819**

The first whale ships, the *Balena* and *Equator* from New Bedford, arrive in Hawaiian waters.

**September 1838**

The birthdate of Queen Lydia Lili'u Loloku Wehiwehi Kamaka'eha, the last reigning monarch of the Kingdom of Hawai'i.

**September 1850**

The first shipment of ice arrives in Hawai'i from Boston via San Francisco.

**September 1922**

Built by the Consolidated Amusement Company, the Hawai'i Theatre, also known as the "Pride of the Pacific" opens to the public.

**September 1958**

St. Andrew's Cathedral in Honolulu is dedicated.

## VEGFEST O'AHU 2019

**Saturday, September 21**

**11:30 am - 5 pm**

**Frank F. Fasi Civic Center**



A celebration of island-style plant-based, sustainable living, the free festival brings together more than 50 booths offering education, food, and entertainment.

Activities include: plant-based cooking demos by expert chefs; speakers on health and environmental topics; a mouthwatering variety of vegan vendors offering local favorites, and comfort foods; yoga and dance classes; lots of free product sampling; and continuous live music. Come meet friendly people and discover the many island resources that support plant-based living. Free Entry and Parking!

For more information, visit <https://vegfestohu.com>



**Art Exhibit** at Honolulu Hale, 530 S King St, M-F, 8am - 4:30 pm

## KAAAH

*Korean Art Association of Hawai'i*

### 28th Children's Art Exhibit

**Aug 30 - Sept 9, Courtyard**

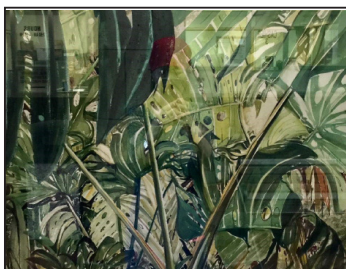
**Reception on Sept 3, 3 - 6pm**

### 34th Annual Member Show

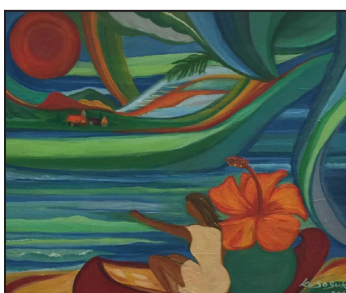
**Sept 9 - 20, Courtyard**

**Reception on Sept 10, 3 - 6pm**

KAAAH will feature a collection of artwork that expresses mixed Korean-American culture in Hawai'i.



Artwork by Jane Ra



Artwork by So Suk Ko

## KLAH

*Korean Literature Association of Hawai'i*

**Sept 23 - Oct 4,**

**Courtyard**

**Reception on Oct 4, 3 - 6pm**

In the *Korean Poetry, Art, Japanese Flower Arrangement* exhibition, KLAH showcases the settlement of Korean immigrants in Hawai'i and their appreciation for this land and its people. Also in this exhibition is the expression of good friendship between the Korean and Japanese people.



**Art Exhibit** at Honolulu Hale, 530 S King St, M-F, 8am - 4:30 pm

# Hawai'i Agricultural Foundation

*My Favorite Dish Made With a Locally Grown, Caught or Raised Product*

## Fruit Smoothie

By Jacob Wada

Bananas and pineapples mixed together you'll see

A delicious, yummy, and tasty smoothie.

Coconuts, papayas, and melons galore

If you want one, what are you waiting for?

**September 9-20,**  
3rd Floor

Winning artworks and poems created by local students for the "Localicious My Favorite Dish Made with a Locally Grown, Caught or Raised product" contest.



Artwork by Carly Myamoto

**Art Exhibit** at Kapolei Hale, 1000 Uluohia Street, M-F, 8am - 4 pm

# Imagine Yourself: Ready to Ride

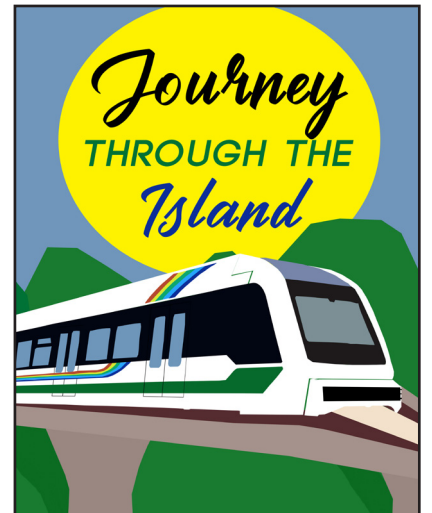
*by Honolulu Authority for Rapid Transportation*

**September 3 - 30**  
Kapolei Hale Courtyard

The Honolulu Authority for Rapid Transportation will display the winners of their 2019 Honolulu Rail Transit Project Art Poster Contest. This year's theme was "Imagine Yourself: Ready to Ride."



Artwork by Joshua Kaliko



Artwork by Lynsey Warren

## Kūhiō Beach Hula Show

6:30 am - 7:30 pm at the Kūhiō Beach Hula Mound, near the Duke Kahanamoku statue, beachside at Uluniu & Kalākaua Avenue in Waikiki, weather-permitting. Outdoors, casual. Seating on the grass; beach chairs, mats, etc. okay.

Cameras are welcome.

### Tuesdays

Ainsley Halemanu and  
Hula Hālau Ka Liko O Ka Palai

### Thursdays

Joan "Aunty Pudgie" Young  
and Puamelia

### Saturdays

~ **Sept 7** Shirley Recca and Halau  
Hula O Namakahulali

~ **Sept 14** NO SHOW DUE TO  
BLOCK PARTY ON KALĀKAUA

~ **Sept 21** NO SHOW DUE TO  
BLOCK PARTY ON KALĀKAUA

~ **Sept 28** Lilinoe Lindsey and  
Ka Pa Nani O Lilinoe

*Schedule is subject to change without notice. For more info call 808-843-8002*

## Royal Hawaiian Band

### ~ Iolani Palace

Sunday - Sept 1, 10 am  
*Queen Lili'uokalani's 181<sup>st</sup> birthday*  
Friday - Sept 6, 13, 20 and 27,  
12 pm

### ~ Ala Moana Stage

Wednesday, Sept 4 and 18, 11 am

### ~ Kapi'olani Bandstand

Sunday - Sept 1, 8, 15, 22 and 29,  
2 pm

### ~ International Marketplace

Thursday - Sept 12, 2 pm

### ~ Pearlridge Center - Mauka Tower

Saturday - Sept 7, 11 am

### ~ Queen Emma Summer Palace

*A day at Queen Emma*  
Saturday - Sept 14, 9am

### ~ Tamarind Park/Bishop Square

*9/11 Remembrance Ceremony*  
Wednesday - Sept 11, noon

### ~ Waikiki Aloha Festivals Ho'olaulea

Saturday, Sept 21 - 5:15 - 5:45 pm

### ~ Waikiki Aloha Festivals Parade

Saturday, Sept 28 - 9 am

*Schedule is subject to change without notice.*

*For more info call 808-768-6677*



Mayor's Office of Culture & the Arts

www.honolulu.gov/moca • moca-info@honolulu.gov • MOCA hotline: 808-768-6666  
~ All exhibits and events are free and open to the public. Dates and times are subject to change.



@honoluluMOCA



facebook.com/honoluluMOCA

~ This newsletter was paid for by the taxpayers of the City and County of Honolulu.