

Kāheea

Newsletter of the Mayor's Office of Culture and the Arts

He 'ohu ke aloha; 'a 'ohe kuahiwi kau 'ole.

(Love is like a mist; there is no mountain top that it does not settle upon. Love comes to all)

Sew A Lei For Memorial Day

Presented by the City and County of Honolulu's Department of Parks and Recreation and MOCA.



May 24
11 am - 1 pm
(or until the flowers run out)
Honolulu Hale,
530 S King St
Help honor our fallen veterans by coming down to Honolulu Hale and sew lei for the Mayor's Memorial Day Ceremony at the National Cemetery of the Pacific (Punchbowl) and other cemeteries in Hawai'i. The Royal Hawaiian Band Glee Club will provide entertainment from 11 am - 12:30 pm. The public is also welcome to drop off lei at Honolulu Hale during this time. Lei need to be at least 22" - 24" in length.

Poster Contest Exhibit

April 17 - May 31,
Honolulu Hale, 3rd Flr Gallery, M - F, 8 am - 4:30 pm

View the original winning artwork from the *Sew a Lei for Memorial Day Poster Contest*, which helps inform the public of the need and importance of sewing a lei for Memorial Day. Reproductions of the winning artwork will also be on display at Kapolei Hale, 1000 Ulu'ohi'a St **May 1 - 31**, M - F, 8 am - 4:30 pm



Hawai'i Book & Music Festival

A Celebration of Story and Song

May 4 & 5, 10 am - 5 pm, Frank F. Fasi Civic Center

Featuring: Local & National Best Sellers • Author Signings • Book Sellers & Publishers
• Live Music • Hula Performances • Keiki Entertainment & Activities • Great Food! •
MUCH, MUCH MORE!

For more information visit <http://www.hawaiibookandmusicfestival.org>



www.honolulu.gov/moca • moca-info@honolulu.gov • MOCA hotline: 808-768-6666
~ All exhibits and events are free and open to the public. Dates and times are subject to change.

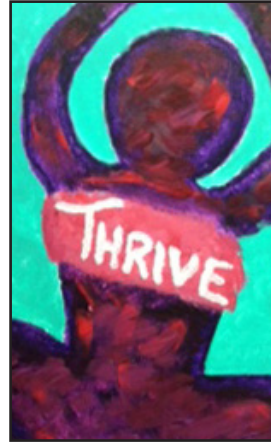
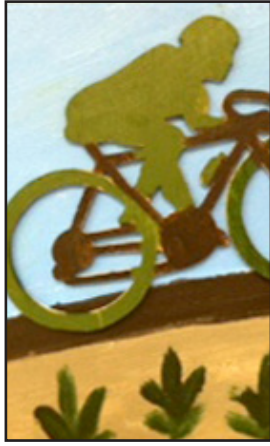
@honoluluMOCA facebook.com/honoluluMOCA

Exhibits at Honolulu Hale, 530 S King St, M - F, 8 am - 4:30 pm

Oncology On Canvas

May 7 - 22, Courtyard
Reception on
May 7, 4 - 6 pm

A collection of artwork celebrating courage, hope, success, struggle and the daily reality and rituals of those coping with cancer.



Water Conservation Week Art & Poetry Contest

May 8 - 28, Lane Gallery
Winning artwork and poems created by local students for the Honolulu Board of Water Supply's annual contest.



Seasons and the Sea

AT THE WAIKIKI AQUARIUM

May 2, 5:30 to 7 pm, Ewa side of the Waikiki Aquarium.

The Waikiki Aquarium and MOCA present a sunset cultural observance that only occurs once a year. This Hawaiian celebration symbolizes the transition from Ho'oilō (wet season) to Kāuwela (hot or warm-dry season) as the sun sets into the crown of Pu'u o Kapolei.

Featuring hula, chant and mo'olelo performances explaining the observance of the change, the links between our lives, and the responsibility and respect for the ocean world.

Guests are encouraged to bring mats or low chairs and sunglasses.



Waikiki Aquarium

Kūhiō Beach Hula Show

6:30 - 7:30 pm at the Kūhiō Beach Hula Mound, near the Duke Kahanamoku statue, beachside at Uluniu & Kalākāua Avenue in Waikiki, weather-permitting. Outdoors, casual. Seating on the grass; beach chairs, mats, etc. okay. Cameras are welcome.

Tuesdays

Ainsley Halemanu and
Hula Hālau Ka Liko O Ka Palai

Thursdays

Joan "Aunty Pudgie" Young
and Puamelia

Saturdays

~ May 4 Sallie Yoza and
Hālau O Napuala'ikauika'iu
~ May 11 Shirley Recca and
Hālau Hula O Namakahulali

~ May 18 Lilinoe Lindsey and
Ka Pa Nani O Lilinoe
~ May 25 **NO SHOW**
(Memorial Day Parade)

Schedule is subject to change without notice. For more info call 808-843-8002

Royal Hawaiian Band

~ Iolani Palace

May 3, 10, 17 and 24, noon

~ Ala Moana Centerstage

May 8 and 22, 11 am

~ Kapi'olani Bandstand

May 12 and 26, 2 pm

~ May 1, 9 - 9:45 am

92nd Annual Lei Day Celebration

Kapi'olani Bandstand

~ May 4, 10 - 10:45 am

Book and Music Festival

Fasi Civic Center Grounds

~ May 5, TBA

~ May 9, 2 pm

International Marketplace

~ May 11, 4 - 4:30 pm

Farrington High School Orchestra and

Ukulele Spring Recital

Farrington High School Auditorium

~ May 15, 5 pm

Honolulu Police Department

Memorial Service

Law Enforcement Memorial

Kalanimoku Building

~ May 24, 11 am - 1 pm

Sew A Lei For Memorial Day

Royal Hawaiian Band Glee Club

Honolulu Hale Courtyard

~ May 27, 8 am

Mayor's Memorial Day Ceremony

National Cemetery of the Pacific,

Punchbowl

Schedule is subject to change without notice.

For more info call 808-922-5331